

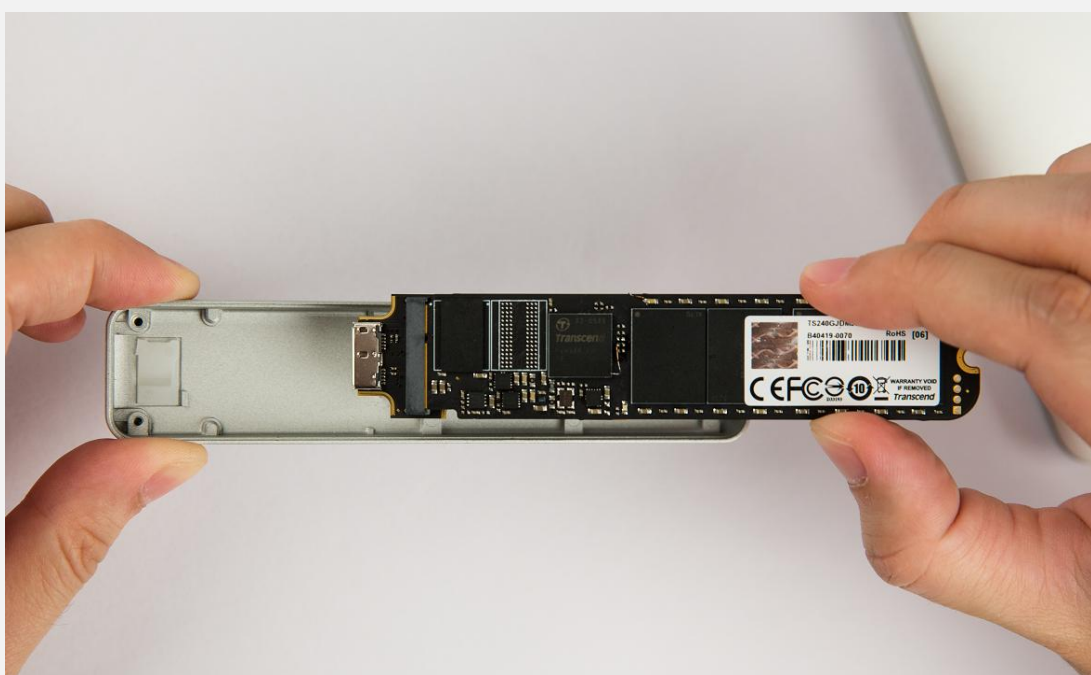
# User's Manual

**Part 1:** How to install a JetDrive SSD Upgrade Kit into your Mac

**Part 2:** How to install your JetDrive SSD into the enclosure



## Part 1: How to install a JetDrive SSD Upgrade Kit into your Mac



1

Install your JetDrive into the included enclosure.  
Please see Part 2 for more details



2

Connect the enclosure to your Mac.



3

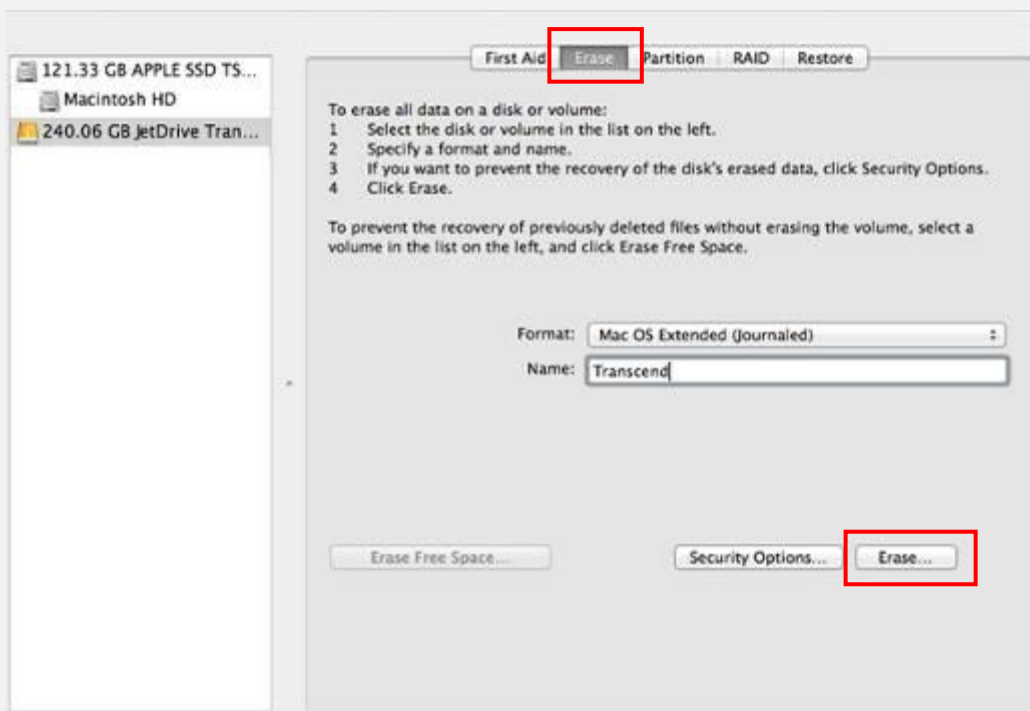
Turn on your Mac and hold the “Option” button during startup until it enters the startup disk selection menu



**4** Select the “Recovery” partition to enter Recovery Mode.



**5** Select “Disk Utility” and click “Continue”.



6

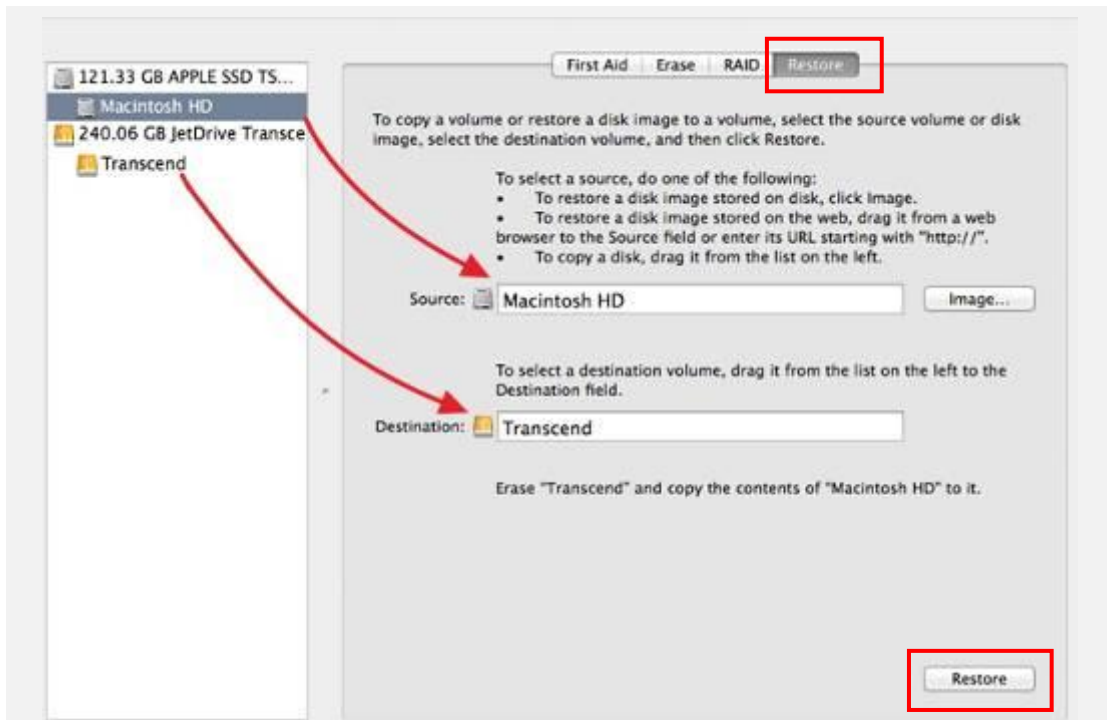
Click the “Erase” tab and select “Mac OS Extended (journaled)” as the format. Enter a name for your JetDrive. Click “Erase.”

✘ Please choose the correct drive before you start erasing.



7

You will see the following warning message before the erase process starts. Click “Erase” to continue.



8

Click the “Restore” tab, select “Macintosh HD” as the source and drag your JetDrive partition into the destination field. Click “Restore” to start the cloning process. This step may take a few minutes.



9

After the cloning process has completed, shut down your Mac and remove your JetDrive from the enclosure.



# 10

Use the included P5 screwdriver to remove the back cover and the T5 screwdriver to remove the screw from the rear of the SSD. Carefully remove the original SSD and insert your JetDrive. Replace all screws to finish the installation

✘ Remember to disconnect the power adapter prior to installing your JetDrive.



# 11

Turn on your Mac and go to System Preferences and click Startup Disk. Select your new JetDrive as the startup disk and restart your Mac.



12

Download the JetDrive Toolbox software from [www.transcend-info.com](http://www.transcend-info.com) to enable TRIM in OSX for your JetDrive.

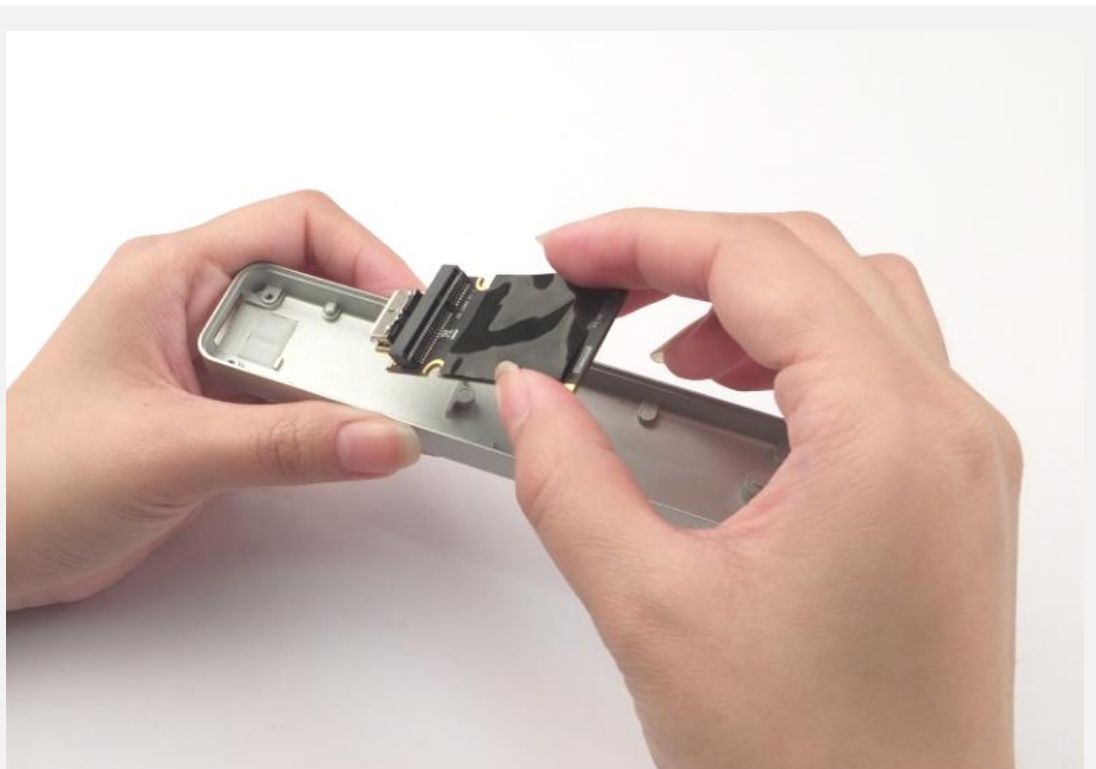


## Part 2: How to install your JetDrive SSD into the enclosure



1

Slide off the plastic shipping tape.



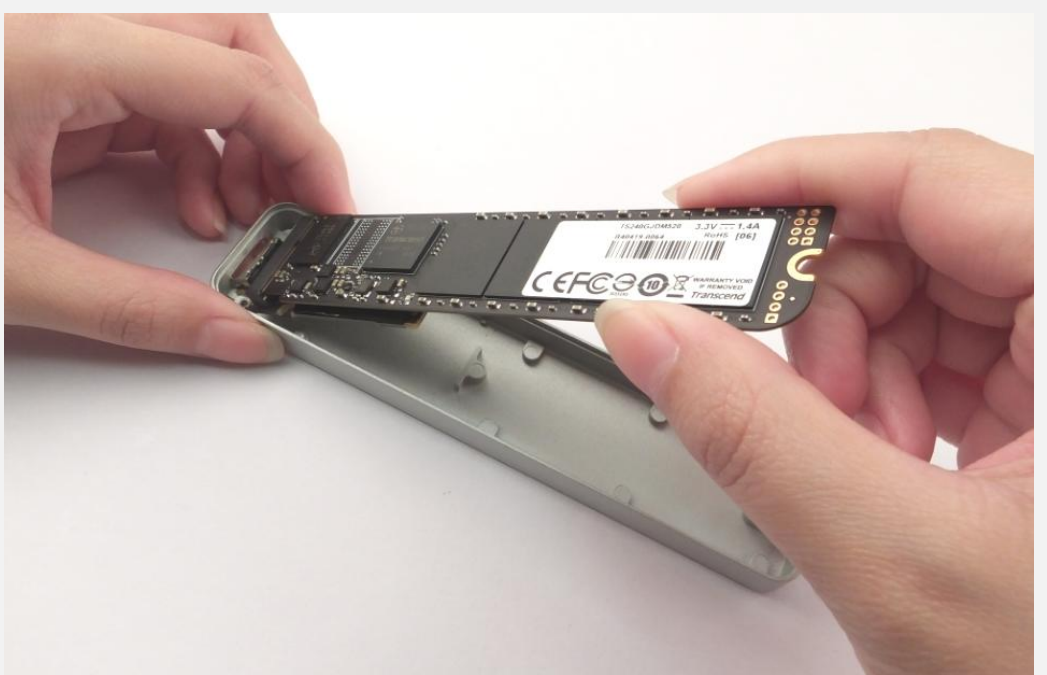
2

Remove the USB to SATA adapter from the enclosure.



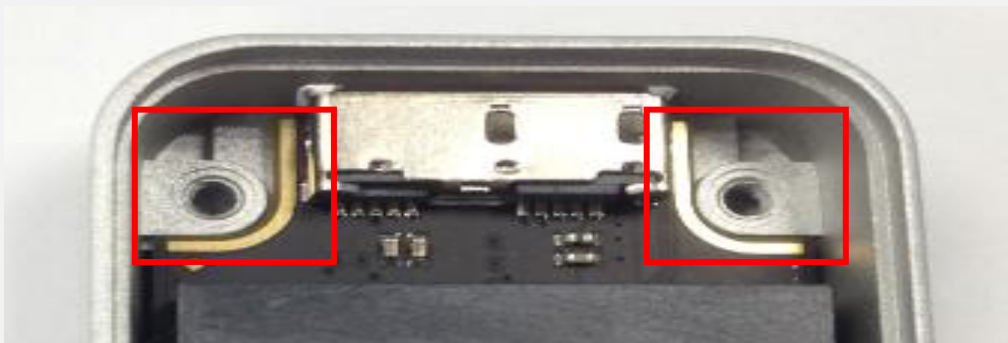
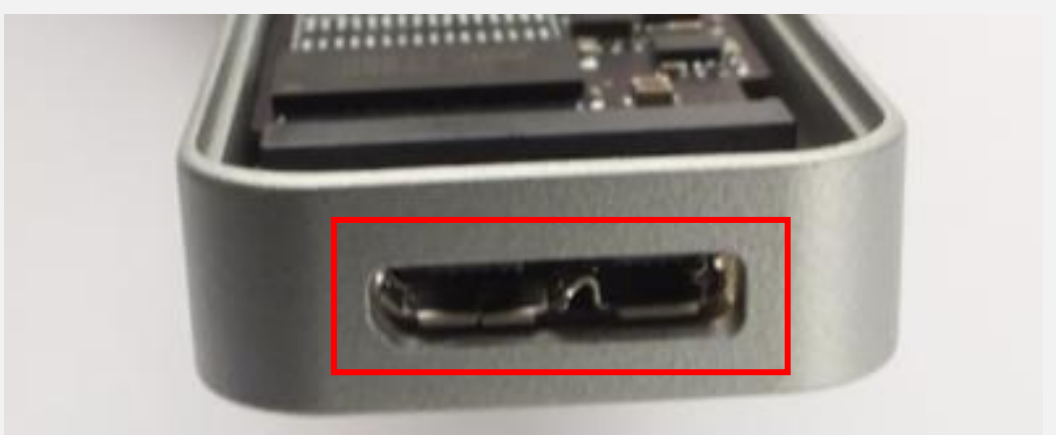
3

Connect your JetDrive to the USB to SATA adapter



4

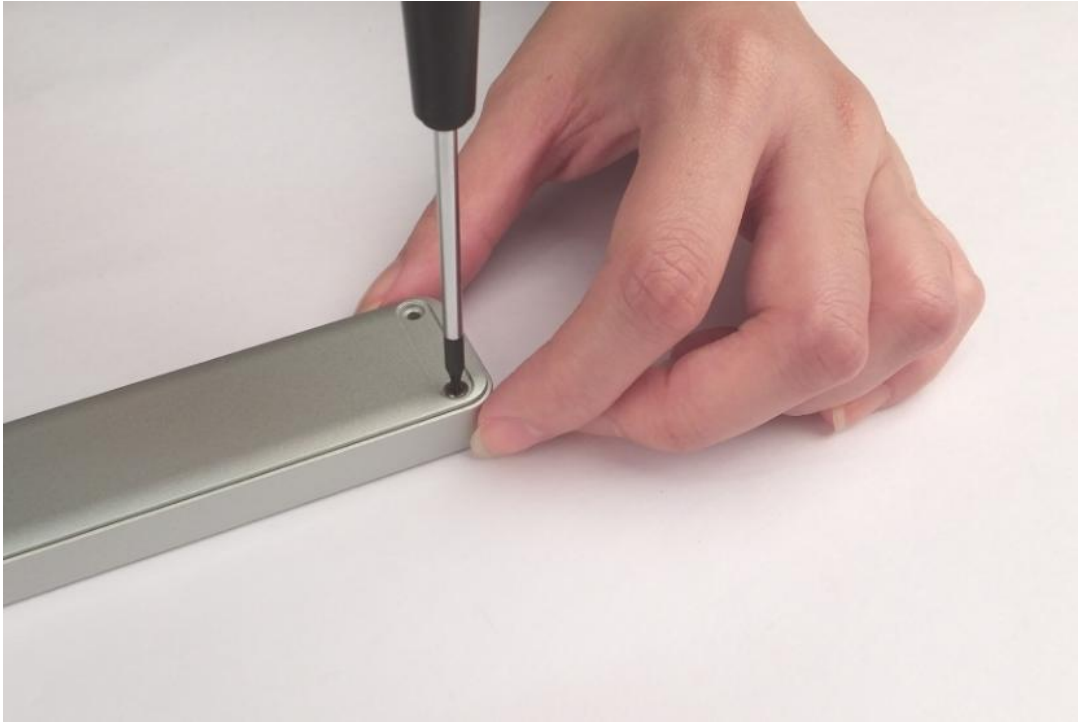
Carefully install your JetDrive and USB to SATA adapter into the enclosure. You may need to slightly tilt the two boards to slide them in.



**5** Make sure the USB connector is located correctly in the opening as shown.



**6** Make sure your JetDrive and USB to SATA adapter is laying flat inside the enclosure



- 7** Orient the bottom cover correctly and affix the three screws.